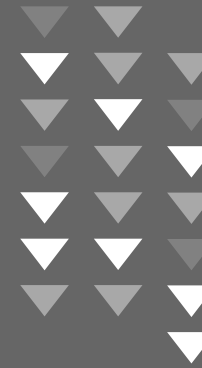




SEATTLE YOUTH EMPLOYMENT PROGRAM



SEATTLE YOUTH EMPLOYMENT PROGRAM

gives low-income youth and young adults in Seattle the opportunity to build critical work skills on the job.

Established over 50 years ago, SYEP offers:

- Competency-based programs that help youth develop transferrable employment skills;
- Wraparound supports, such as bus tickets, clothing, and food cards for lunches;
- An innovative mix of academics and employment to help young people “earn while they learn”; and
- Culturally competent staff, community based partners, and internship placements.

In the following pages, you’ll see how interns spent the summer of 2017 with SYEP’s amazing community of employers.



2017 Summer Staff



Duwamish Valley Youth Corps

Duwamish Valley Youth Corps





UPHILL DESIGNS





SEWARD PARK
Audubon CENTER





ONE Bites





SWEDISH





SWEDISH



Goodwill

Because jobs change lives





Mayor's Office and Central Budget Office





**City Dept Field
Trips**



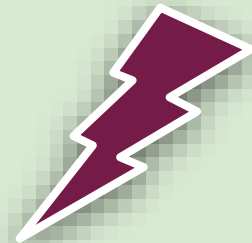


Horn of Africa Services





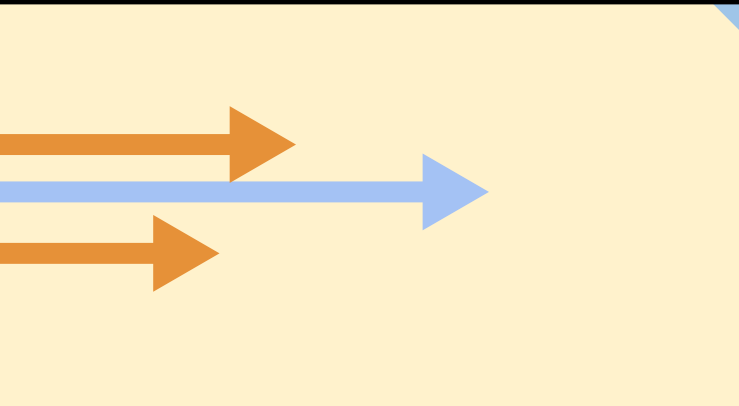
Parks Academy of Learning



COYOTE CENTRAL

CREATIVITY IN ACTION







Port 
of Seattle



Port of Seattle



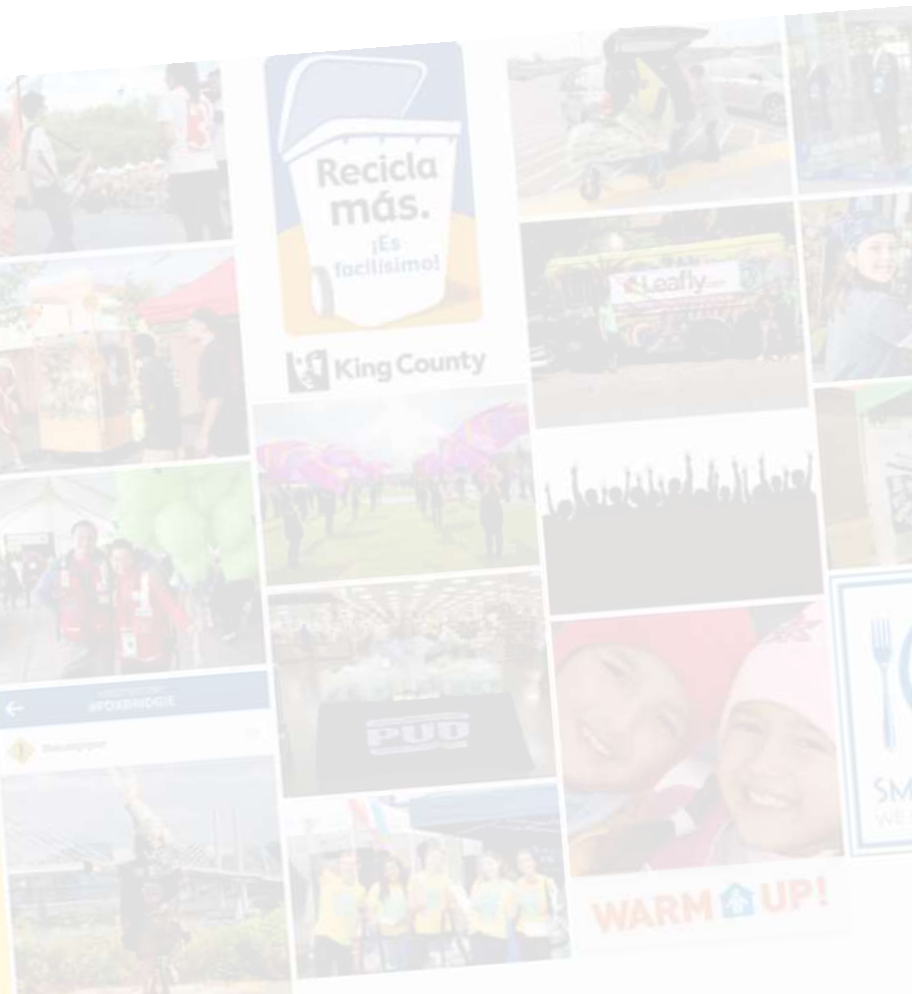
Seattle Department of Transportation





eliminating racism
empowering women

ywca



Recicla más.
¡Es facilísimo!

King County

Leafly

SMART-CATCH
WE SERVE SUSTAINABLE

WARM UP!



C+C | ALL ABOUT THE GOOD





Finance and Administrative Services





Information Technology

Computer and internet access in Seattle



85% of those surveyed and **75%** of focus group participants have at least "some" internet access at home.

Community technology access sites are **VITAL** for those with limited resources. **1/5th** of our phone respondents and **45%** of online respondents use computers at the library. **15%** of online respondents go to a community center to use a computer.

Seattle is a mobile internet community

72% (Laptop) > 62% (Smartphone) > 55% (Desktop)

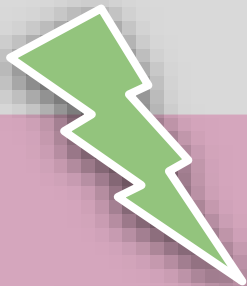
Social media use in Seattle



Since 2009, Seattle has seen mobile phone ownership grow by **11%** and a **66%** growth in the number of residents with smart phones

Overall mobile internet access is **lower** among under-represented participants—





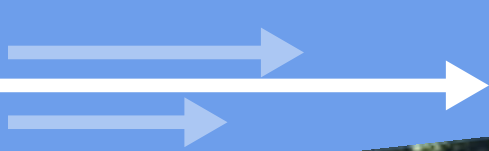


**Seattle
Public
Utilities**





THE SERVICE BOARD



Downtown
Seattle
Association





MAKERS





SKATE

LIKE A GIRL

ALL AGES.
ALL ABILITIES.



SANCTUARY

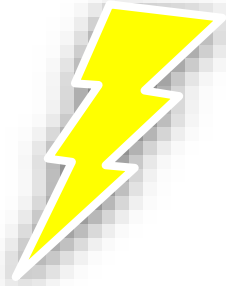
art center

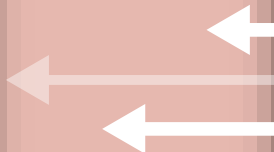
Life-Changing
Art





GARDEN SQUAD







EAST AFRICAN
COMMUNITY SERVICES 



Austin Foundation

Transforming Lives Through Fitness



BOYS & GIRLS CLUBS
OF KING COUNTY





 **FARESTART**
Great Food. Better Lives.



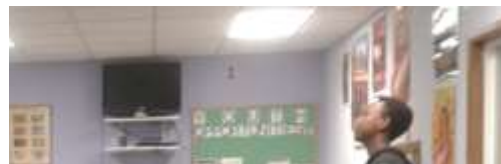
PACIFIC SCIENCE CENTER





የኢትዮጵያውያን ማህበረሰብ በሲያትል

Ethiopian Community In Seattle





To learn more about becoming a
**SEATTLE YOUTH
EMPLOYMENT PROGRAM**
Employer, please contact:

Angel Lopez
Community Services Manager

Angel.Lopez@seattle.gov
(206) 898-3419

2017 Summer Staff